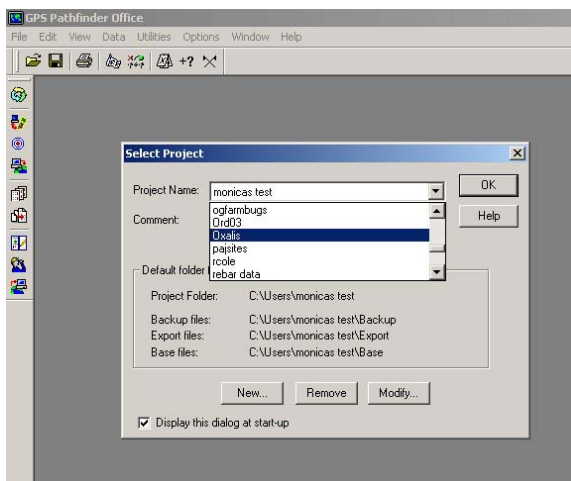


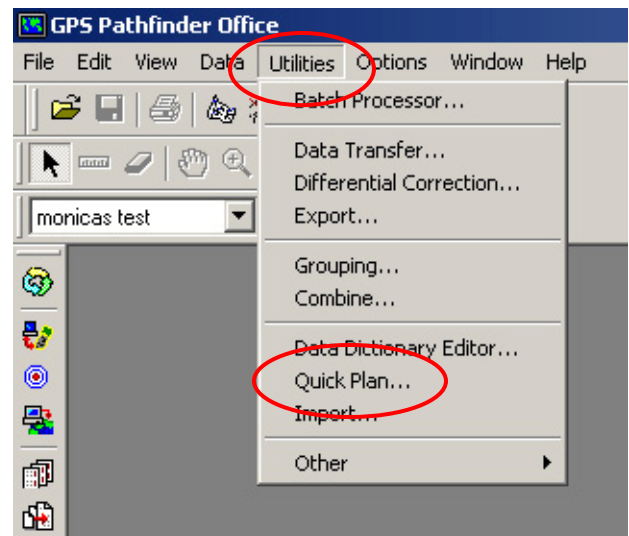
Almanac GPS Pathfinder

- 1) Open GPS Pathfinder either from the icon on the desktop or from the Program File Folder

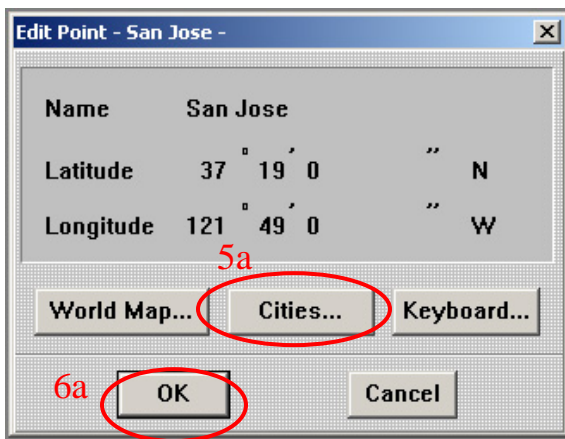
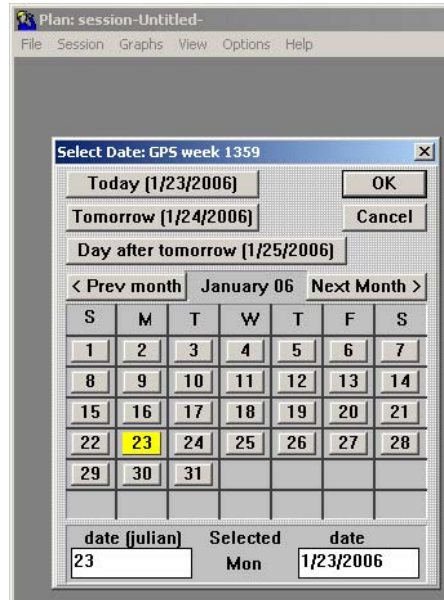


- 2) Open your Project Data

- 3) Choose "Utilities", select "Quick Plan"

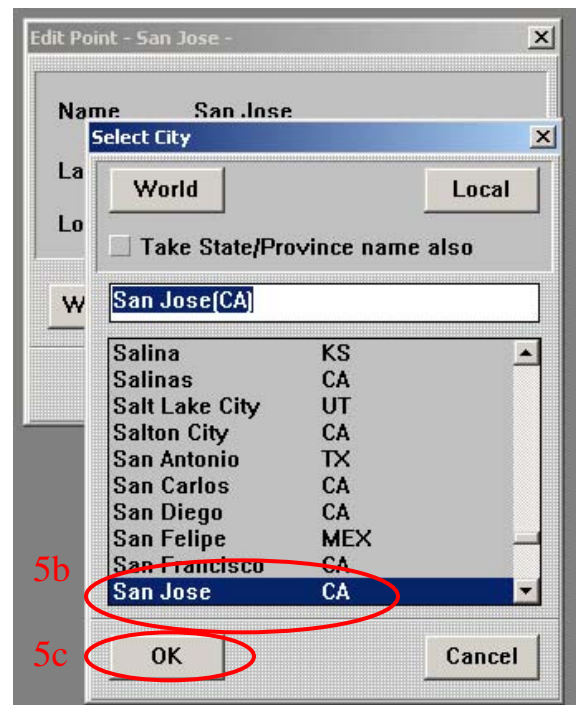


- 4) Chose the date you wish to go out into the field.
Click "OK"

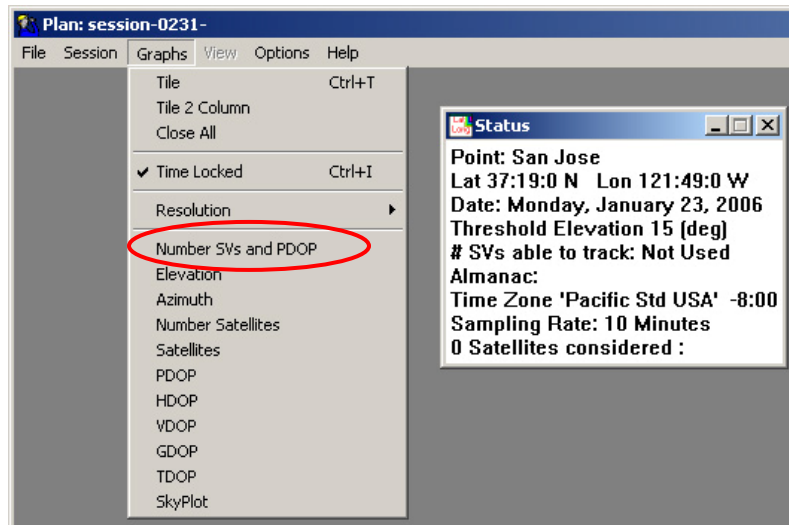


- 5) To Select the correct City
 - a. Choose "Cities",
 - b. Select "San Jose (CA)"
 - c. Click "OK"

- 6) Click "OK"



- 7) Under “Graphs”, Select what type of Graph you wish to see.
 - a. The most common used is “Number SV’s and PDOP”.



- 8) Now that the graph is viewable you can print this graph or look at other relevant data.
 - a. The Gradient of Colors is as follows from the best time to go out to the worst: purple, dark blue, light blue, green.
 - b. Match the best time scheme for readings with the dates and times from these graphs.

