

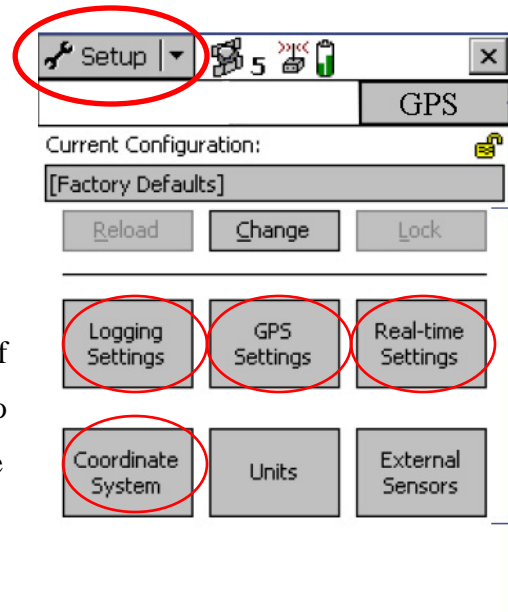
Default Settings for GeoXT/XH

(1) On the GeoXt screen, open “TerraSync” application.

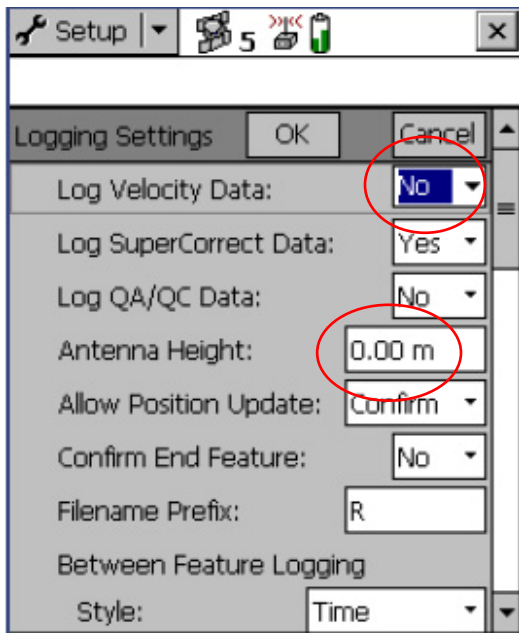
(2) From the upper left hand menu, choose “Setup”

There are four important menus to check before taking out the GeoXT/XH (Logging, GPs, Real-Time and Coordinate System).

The default settings below are for **collecting point data with the GeoXT only (without the ProXR attached)**. If you need to collect line data, there are two key settings to change (see below). There currently is no tutorial for line or polygon data collection.



DO NOT ADJUST ANY OTHER SETTINGS OTHER THAN THE SETTINGS BELOW

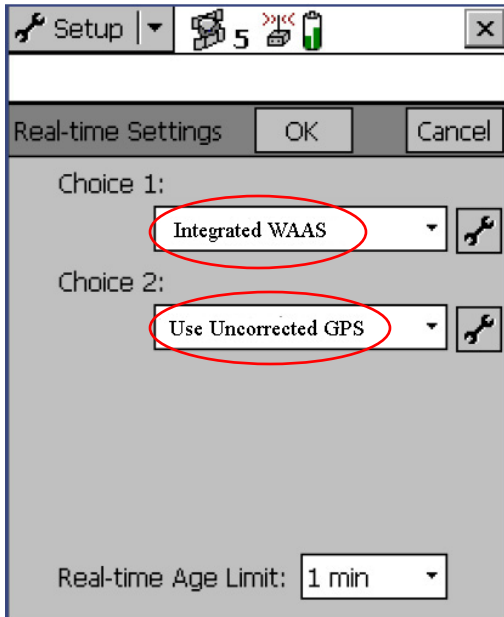
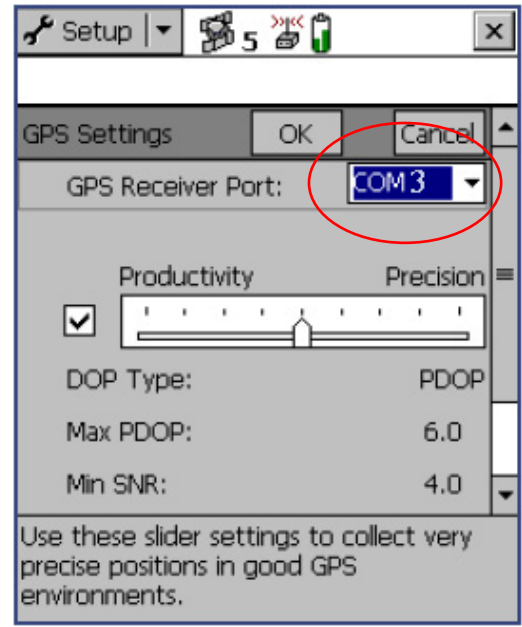


Logging Settings:

1. Log Velocity Data: “NO” (for point data)
 - a. “YES” (for line data)
2. Antenna Height: 2m (adjust appropriately for the height of the antenna)
3. Click “OK”

GPS Settings:

1. GPS receiver port: "Com3"
 - a. if you have to change the com port back to com 3 (the default setting) you must also then reconnect the GPS by clicking the GPS button in the GPS Settings Menu.
2. Velocity Filer: "Off" (for point data)
 - a. "On" (for line or area data)
3. Max PDOP: 6
 - a. If not move the cursor bar between Productivity and Precision to get desired results.
4. Click "OK"

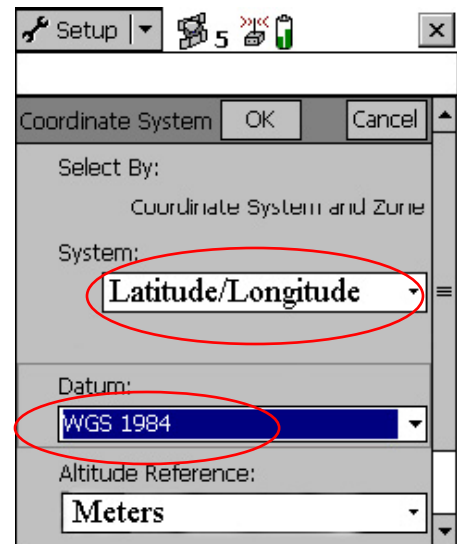


Real-time Settings:

1. Choice 1: "Integrated WAAS"
2. Choice 2: "Use Uncorrected GPS"
3. Click "OK"

Coordinate System:

1. System "Latitude/Longitude"
2. Datum: "WGS 1984"
3. "OK"



If The Keyboard needs to be reset follow these steps:

1. From the Desktop of the GPS Unit
2. Start
3. Settings
4. Control Panel
5. Input Panel
6. Set to **keyboard** vs. numeric
7. **Unclick** Allow other programs to change settings